



Sportive Rules

# CLASSIFICATION OF THE ROUNDS

Version : 1.0

Date : 31/10/2019

---

Author(s) : WRRRC Presidium

---

Date of WRRRC Presidium approval: 30/11/2019

Visa :

on behalf of WRRRC Presidium  
Mr. Patrice DE LA TORRE  
WRRRC VP Legal Affairs

---

This booklet may not be reproduced or translated in whole or in part in any manner without the permission of The World Rock'n'Roll Confederation Presidium.

---

Version	Description of modifications
1.0	Original version with new distribution

## SUMMARY

<b>1</b>	<b>INTRODUCTION.....</b>	<b>4</b>
<b>2</b>	<b>CATEGORIES OF COUPLE.....</b>	<b>4</b>
<b>2.1</b>	<b>World Cup without seeded couples.....</b>	<b>4</b>
2.1.1	7 or less couples at the start.....	4
2.1.2	Less than 15 couples at the start.....	4
2.1.3	From 15 to 32 couples at the start.....	5
2.1.4	From 33 to 62 couples at the start.....	6
2.1.5	More than 62 couples at the start.....	7
<b>2.2</b>	<b>World Cup with seeded couples.....</b>	<b>8</b>
2.2.1	7 or less couples at the start.....	8
2.2.2	Less than 15 couples at the start.....	8
2.2.3	From 15 to 32 couples at the start.....	9
2.2.4	From 33 to 62 couples at the start.....	10
2.2.5	More than 62 couples at the start.....	11
<b>2.3</b>	<b>Continental or World Championship.....</b>	<b>12</b>
<b>3</b>	<b>CATEGORIES OF FORMATION.....</b>	<b>12</b>
<b>3.1</b>	<b>7 or less formations at the start.....</b>	<b>12</b>
<b>3.2</b>	<b>Less than 15 formations at the start.....</b>	<b>12</b>
<b>3.3</b>	<b>More than 14 formations at the start.....</b>	<b>13</b>

## 1 INTRODUCTION

The following rules shall apply for the classification of the rounds, (except for the Multisport games, World Cup Final or similar).

## 2 CATEGORIES OF COUPLE

There are three different modalities for the organization of the rounds:

1. World Cup without seeded couples
2. World Cup seeded couples
3. Continental or World Championship

### 2.1 World Cup without seeded couples

- World, Continental and Subcontinental Championships, couples and Formations, Rock'n'Roll and Boogie-Woogie;
- Rock'n'Roll Children and Couple Dance-Show;
- World-Cups Boogie-Woogie Juniors and Seniors;
- World Cup final for all categories;
- all other WRRRC granted Competitions.

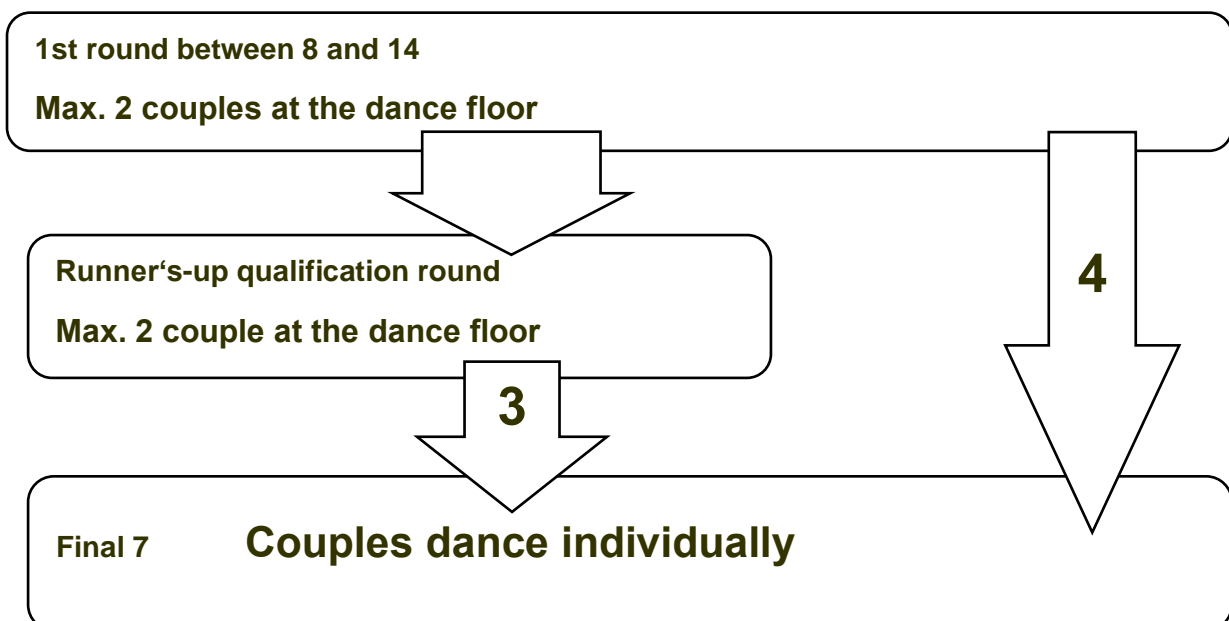
#### 2.1.1 7 or less couples at the start

If 7 couples or fewer competing then only a final shall be organized.

**If 7 or fewer are at the start there is only a final**

#### 2.1.2 Less than 15 couples at the start

If between 8 and 14 couples competing, 4 couples from the first round and 3 couples from the runners-up qualification round shall be promoted to the final, which will consequently consist of 7 couples.

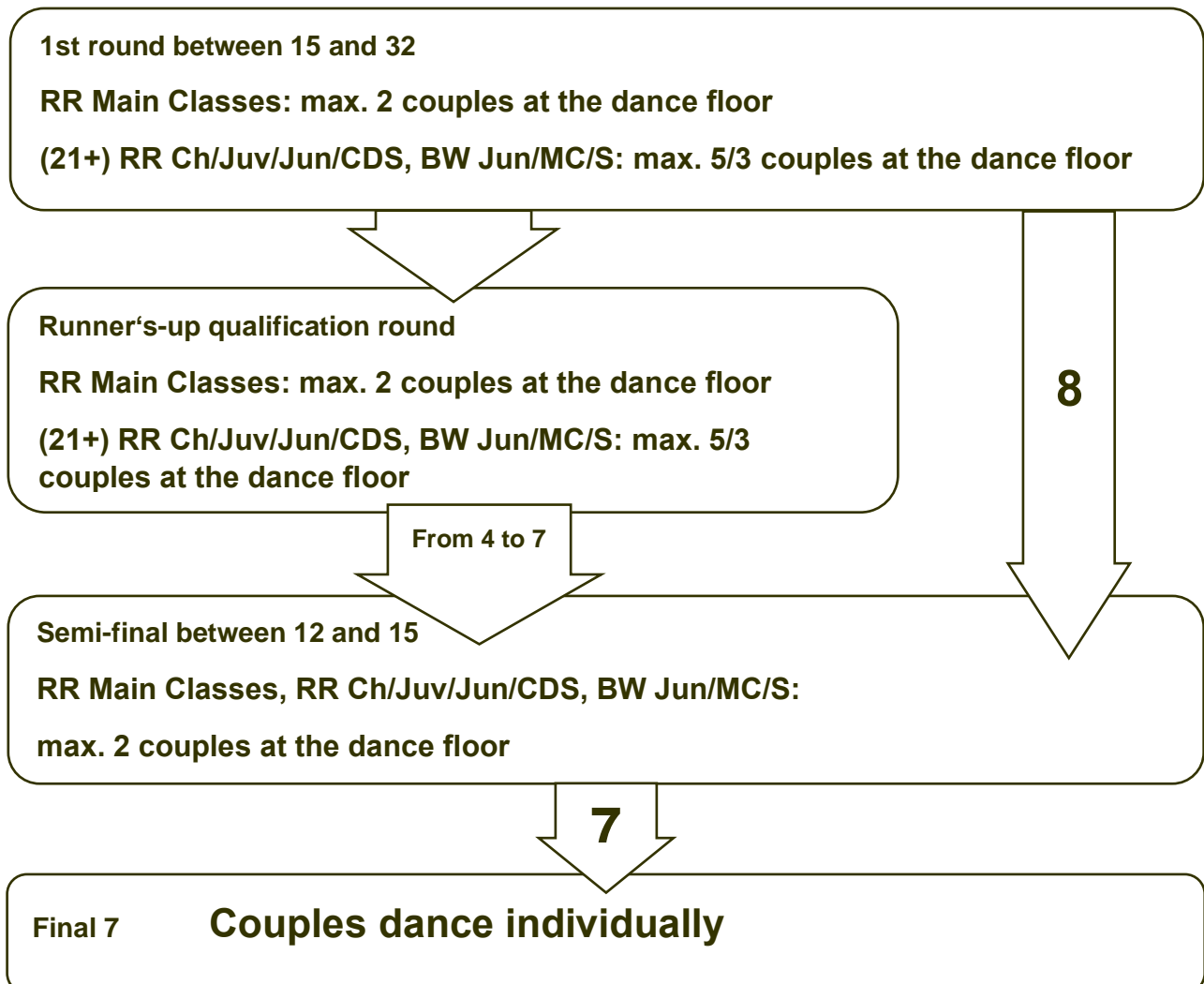


2.1.3 From 15 to 32 couples at the start

If between 15 and 32 couples competing, 8 couples from the first round and :

- If between 15 to 20 couples competing, 4 couples from the runners-up qualification round shall be promoted to the semi- final, which will consequently consist of 12 couples.
- If between 21 to 24 couples competing, 5 couples from the runners-up qualification round shall be promoted to the semi- final, which will consequently consist of 13 couples.
- If between 25 to 28 couples competing, 6 couples from the runners-up qualification round shall be promoted to the semi- final, which will consequently consist of 14 couples.
- If between 29 to 32 couples competing, 7 couples from the runners-up qualification round shall be promoted to the semi- final, which will consequently consist of 15 couples.

In any case, 7 couples shall be promoted to the final.

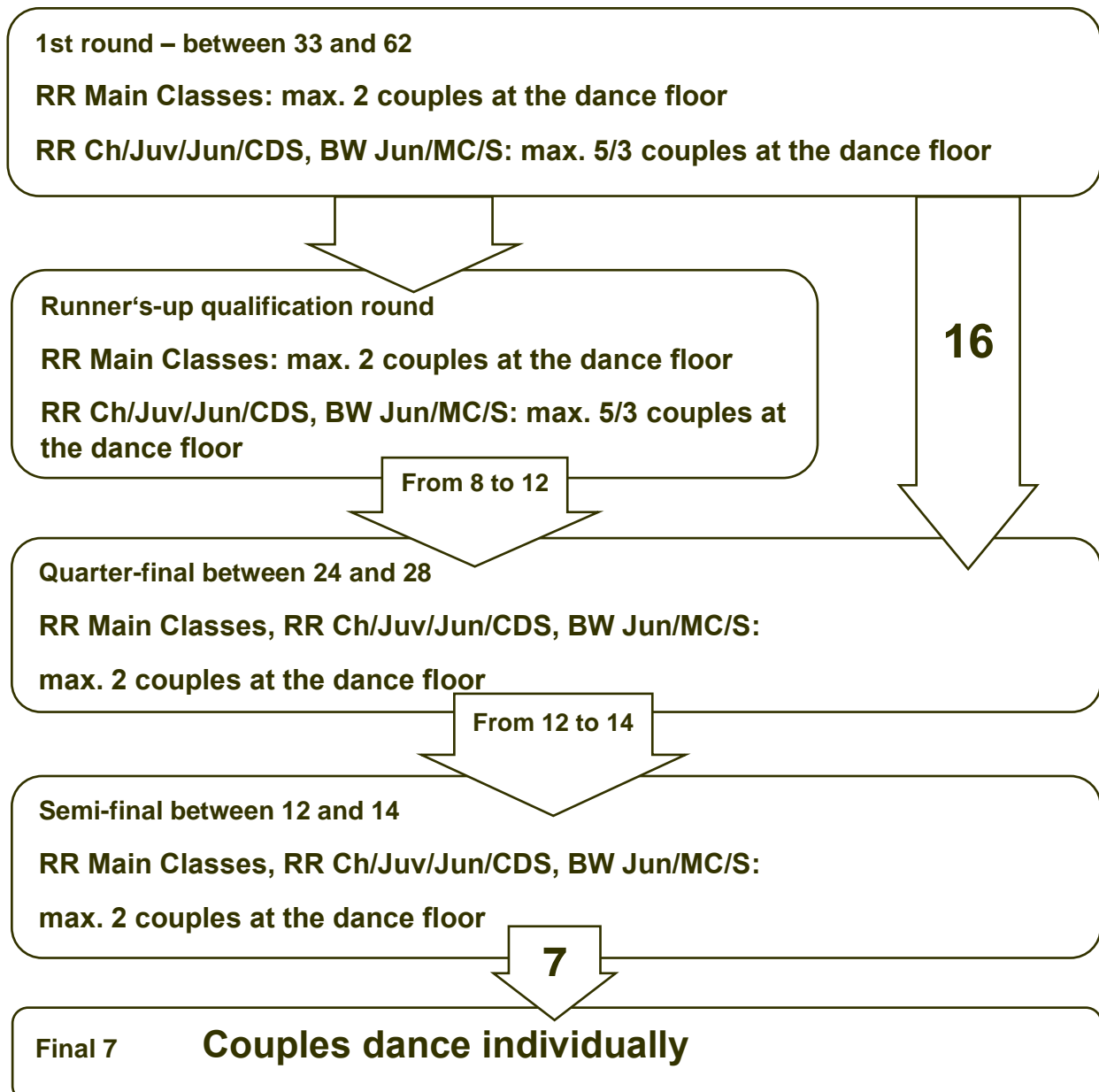


2.1.4 From 33 to 62 couples at the start

If between 33 and 62 couples competing, 16 couples from the first round and :

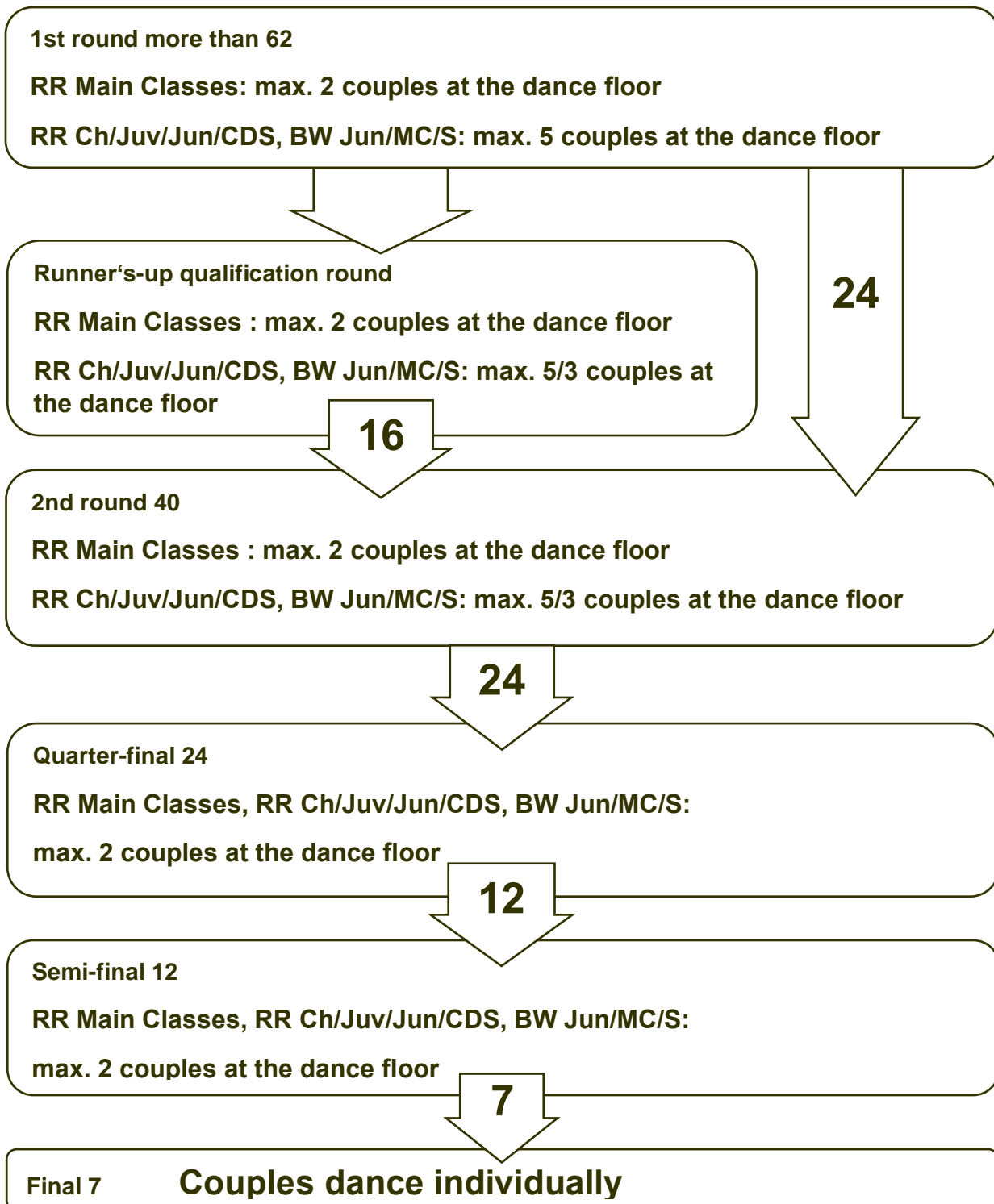
- If between 33 to 42 couples competing, 8 couples from the runners-up qualification round shall be promoted to the quarter- final, which will consequently consist of 24 couples. 12 couples shall be promoted to the semi-final.
- If between 43 to 52 couples competing, 10 couples from the runners-up qualification round shall be promoted to the quarter- final, which will consequently consist of 26 couples. 13 couples shall be promoted to the semi-final.
- If between 53 to 62 couples competing, 12 couples from the runners-up qualification round shall be promoted to the quarter- final, which will consequently consist of 28 couples. 14 couples shall be promoted to the semi-final.

In any case, 7 couples shall be promoted to the final.



2.1.5 More than 62 couples at the start

If there are more than 62 couples competing, 24 couples from the first round and 16 couples from the runners-up qualification round shall be promoted to the second round, which will consequently consist of 40 couples. 24 couples from the second round shall be promoted to the quarter-final, from which 12 couples shall be promoted to the semi-final. 7 couples shall be promoted to the finals.



## 2.2 World Cup with seeded couples

On all competitions where seeded couples are foreseen (listed below), seeded couples will be distributed only if more than 24 couples will be present on the competition. Only top 6 couples from the World Ranking lists will be seeded, without substitutions in case of one or more seeded couples will not be present on the competition.

- World-Cups Rock'n'Roll Main Class Free and Contact Styles, Juniors and Juveniles (except World Cup Final);
- International Open Rock'n'Roll;
- World-Cups Boogie-Woogie Main-Class, Seniors and Juniors (except World Cup Final).

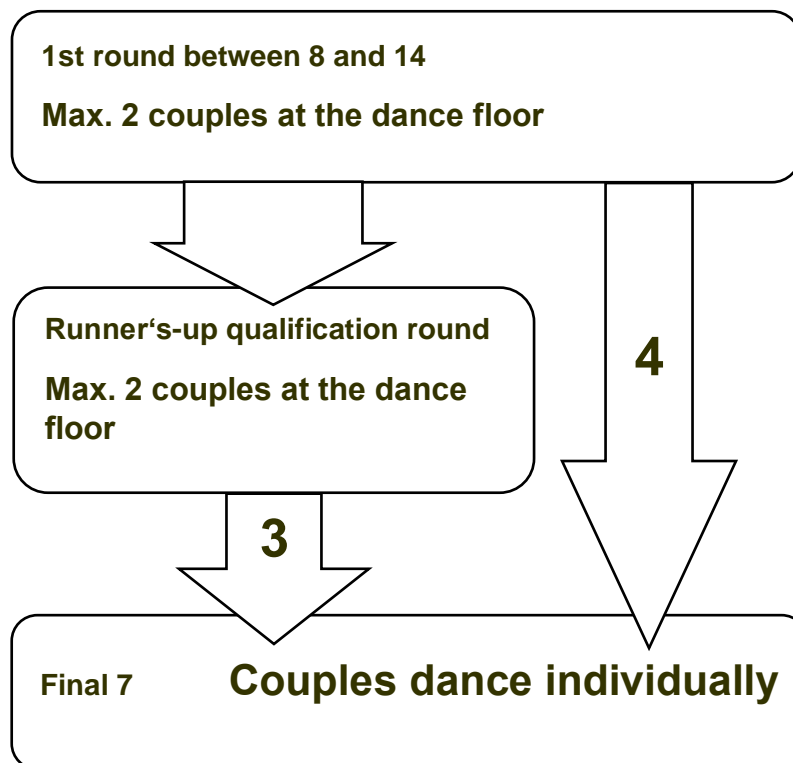
### 2.2.1 7 or less couples at the start

If 7 couples or fewer competing then only a final shall be organized.

**If 7 or fewer are at the start there is only a final**

### 2.2.2 Less than 15 couples at the start

If between 8 and 14 couples competing, 4 couples from the first round and 3 couples from the runners-up qualification round shall be promoted to the final, which will consequently consist of 7 couples.



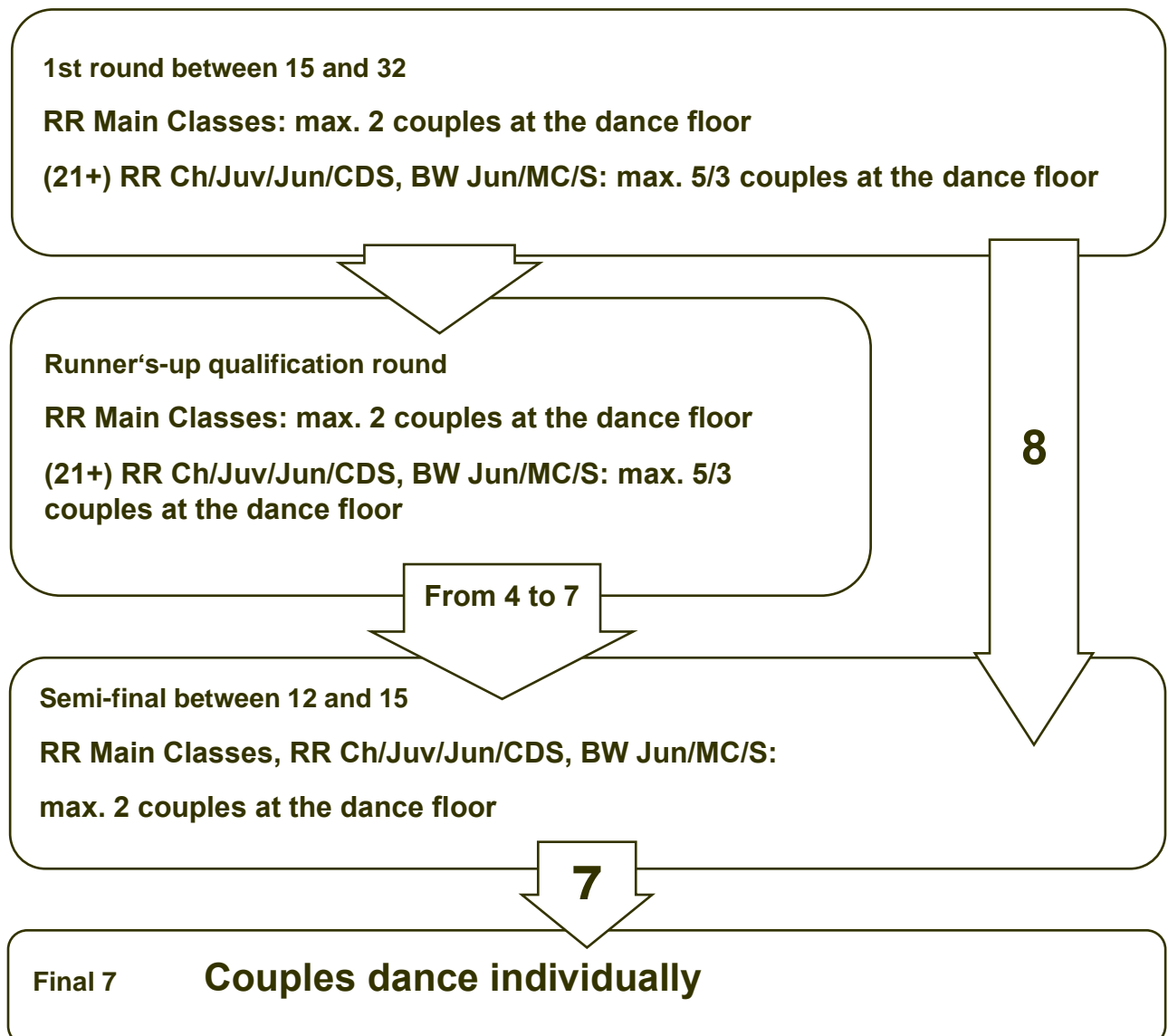


2.2.3 From 15 to 32 couples at the start

If between 15 and 32 couples competing, 8 couples from the first round and :

- If between 15 to 20 couples competing, 4 couples from the runners-up qualification round shall be promoted to the semi- final, which will consequently consist of 12 couples.
- If between 21 to 24 couples competing, 5 couples from the runners-up qualification round shall be promoted to the semi- final, which will consequently consist of 13 couples.
- If between 25 to 28 couples competing, 6 couples from the runners-up qualification round shall be promoted to the semi- final, which will consequently consist of 14 couples.
- If between 29 to 32 couples competing, 7 couples from the runners-up qualification round shall be promoted to the semi- final, which will consequently consist of 15 couples.

In any case, 7 couples shall be promoted to the final.

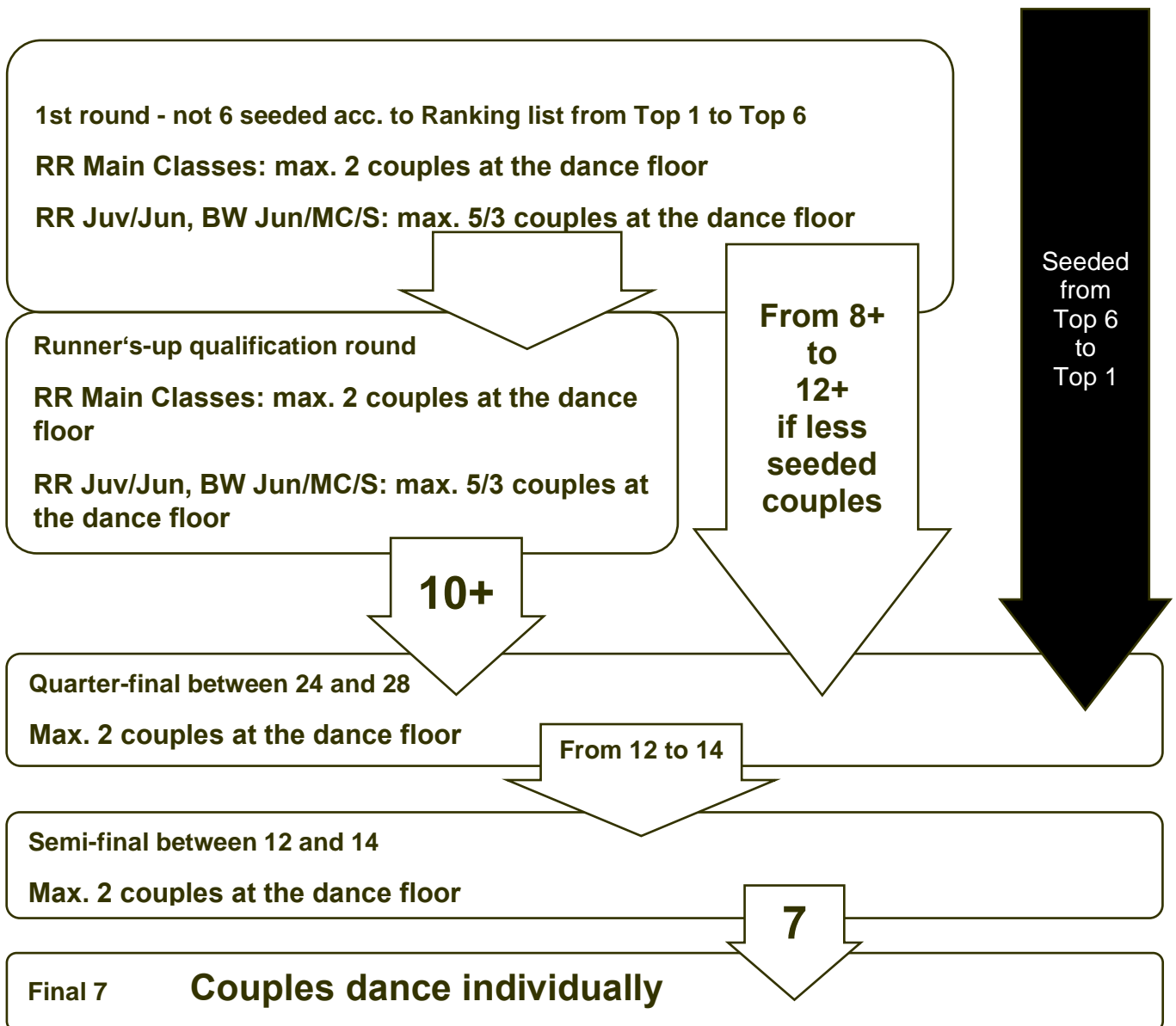


2.2.4 From 33 to 62 couples at the start

If between 33 and 62 couples competing, 10 couples (more if missing seeded) + seeded couples from the first round and :

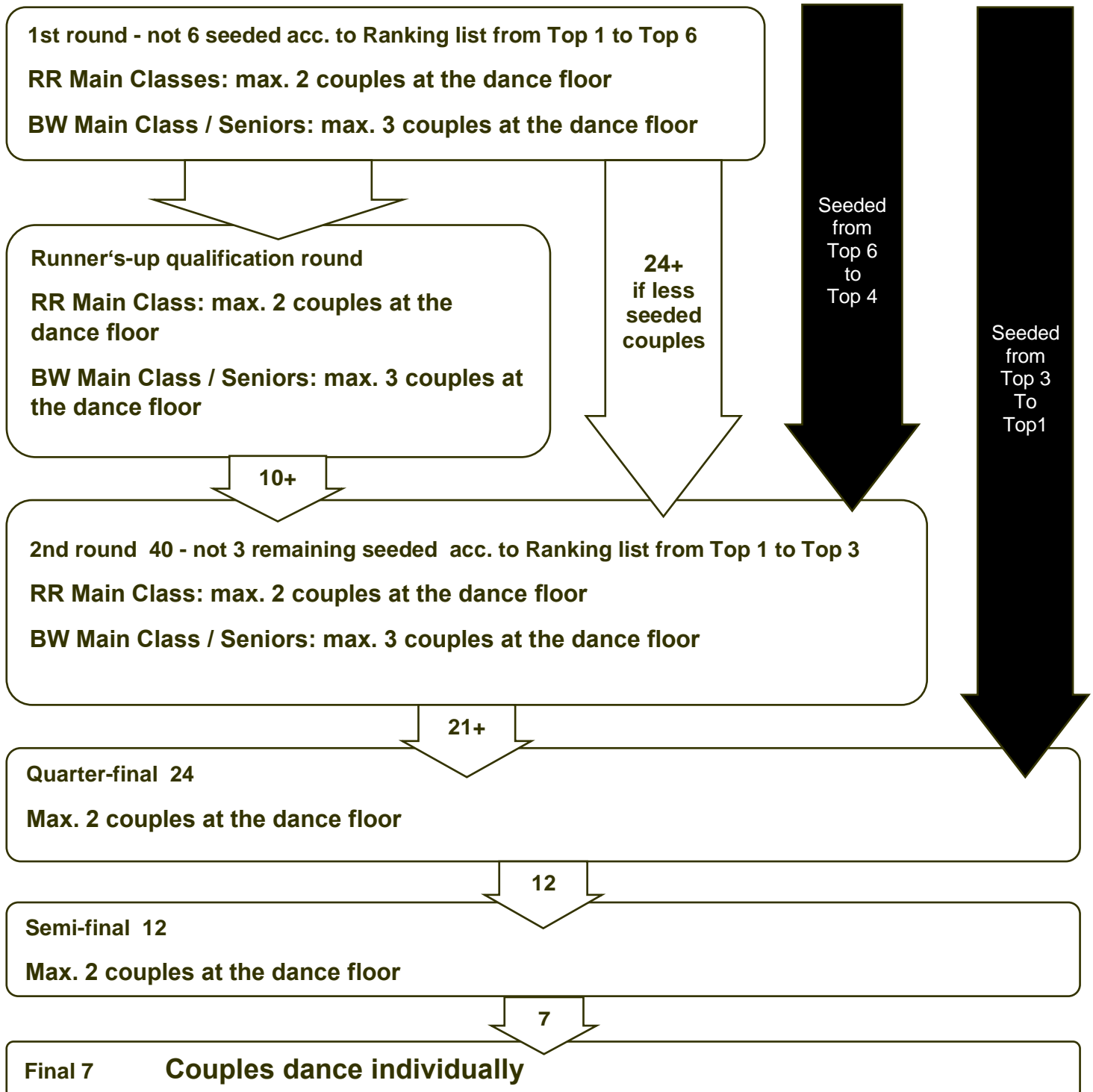
- If between 33 to 42 couples competing, 8 couples (more if missing seeded) from the runners-up qualification round shall be promoted to the quarter- final, which will consequently consist of 24 couples. 12 couples shall be promoted to the semi-final.
- If between 43 to 52 couples competing, 10 couples (more if missing seeded) from the runners-up qualification round shall be promoted to the quarter- final, which will consequently consist of 26 couples. 13 couples shall be promoted to the semi-final.
- If between 53 to 62 couples competing, 12 couples (more if missing seeded) from the runners-up qualification round shall be promoted to the quarter- final, which will consequently consist of 28 couples. 14 couples shall be promoted to the semi-final.

In any case, 7 couples shall be promoted to the final.



2.2.5 More than 62 couples at the start

If there are more than 62 couples competing, Ranking list Top 4 to Top 6 couples (seeded) and 21 couples (more if missing seeded) from the first round and the rest from the runners-up qualification round shall be promoted to the second round, which will consequently consist of 40 couples. Ranking list Top 1 to Top 3 couples (seeded) and the rest from the second round shall be promoted to the quarter-final, from which 12 couples shall be promoted to the semi-final. 7 couples shall be promoted to the finals.



### 2.3 Continental or World Championship

On Continental or World Championship, there is maximum 2 couples on the floor for all rounds and for all categories.

## 3 CATEGORIES OF FORMATION

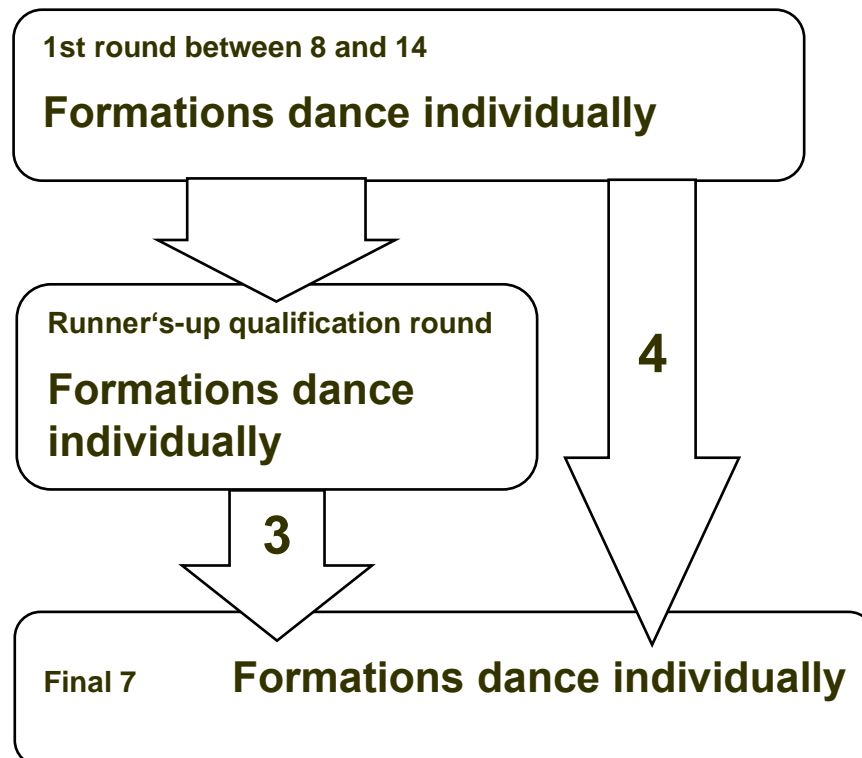
### 3.1 7 or less formations at the start

If 7 formations or fewer competing then only a final shall be organized.

**If 7 or fewer are at the start there is only a final  
Formations dance individually**

### 3.2 Less than 15 formations at the start

If between 8 and 14 formations competing, 4 formations from the first round and 3 formations from the runners-up qualification round shall be promoted to the final, which will consequently consist of 7 formations.

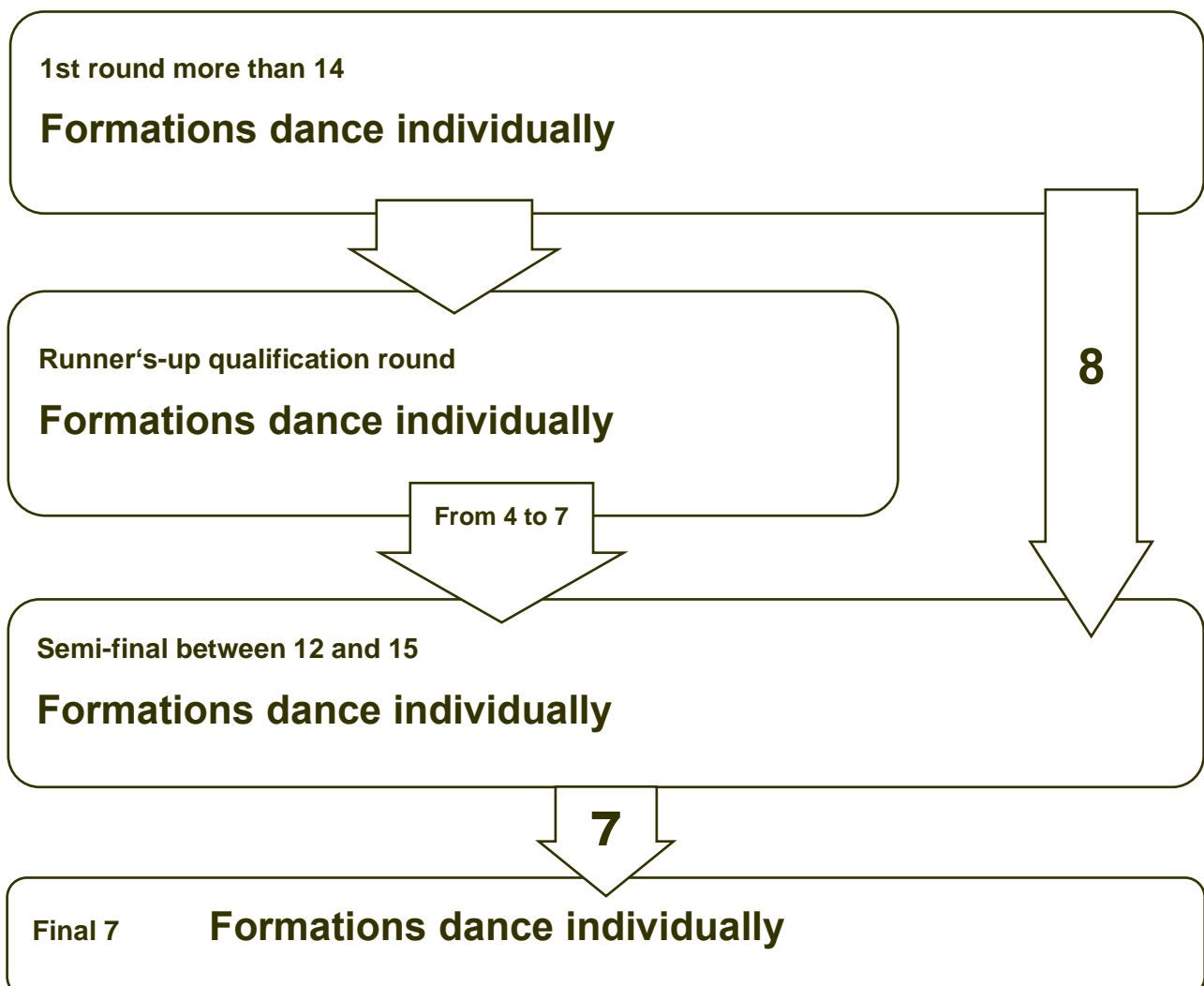


### 3.3 More than 14 formations at the start

If more than 14 formations competing, 8 formations from the first round and :

- If between 15 to 20 formations competing, 4 formations from the runners-up qualification round shall be promoted to the semi- final, which will consequently consist of 12 formations.
- If between 21 to 25 formations competing, 5 couples from the runners-up qualification round shall be promoted to the semi- final, which will consequently consist of 13 couples.
- If between 26 to 30 formations competing, 6 formations from the runners-up qualification round shall be promoted to the semi- final, which will consequently consist of 14 formations.
- If more than 30 couples competing, 7 formations from the runners-up qualification round shall be promoted to the semi- final, which will consequently consist of 15 formations.

In any case, 7 formations shall be promoted to the final.





---

This booklet may not be reproduced or translated in whole or in part in any manner without the permission of The World Rock'n'Roll Confederation Presidium.

---